

APEX SC SERIES

RIGID CONSTRUCTION FOR PRECISION POSITIONING AND STEADY MOVEMENT

The SC Series robot is for molding machines from 80-4500 tons. The SC full AC servo robot will maximize molder productivity while minimizing capital expenditures. The CNC controls allow for greater flexibility during pre- and postmolding applications. The rigid steel traverse beam and sub-weldment provide for a near deflection-free travel.



Features

- C-axis 90° wrist flip
- 2 pneumatic pressure circuits
- 1 vacuum circuit
- SPI compatible 32-pin/10 amp robot side connector
- Rigid steel structure built for steady movement and precision positioning with various payload capacities
- Multi-function program built in as standard
- 14 spare inputs / 14 spare outputs
- Cable guide protection on electrical wires and air hoses
- Offers rapid acceleration and deceleration
- Precision positioning and accurate repeatability within +/- 0.1 mm

Options

- Additional pneumatic pressure circuit(s)
- Additional vacuum circuit(s)
- A-axis pneumatic wrist rotate
- End of arm tooling quick change plate(s) for additional tools
- Two-stage telescopic vertical arm for overhead clearance issues (standard on models 1500 and higher)



APEX SC SERIES

SMALL BEAM (80-1000 TON) TRAVERSE ROBOTS

Model Number	Vertical Stroke, mm (in.)	Kick Stroke, mm (in.)	Traverse Stroke, mm (in.)	Payload, lbs.	
Single stage vertical arm					
SC-900-1710	864 (34)	360 (14.2)	1710 (67.3)	26.4	
SC-900-1950			1950 (76.8)		
SC-900-2130			2130 (83.9)		
SC-900-2600			2600 (102.4)		
SC-900-3000			3000 (118.1)		
SC-1100-1950	1064 (41.9)	480 (18.9)	1950 (76.8)		
SC-1100-2130			2130 (83.9)		
SC-1100-2600			2600 (102.4)		
SC-1100-3000			3000 (118.1)		
SC-1300-2130	1264 (49.8)	600 (23.6)	2130 (83.9)		
SC-1300-2600			2600 (102.4)		
SC-1300-3000			3000 (118.1)		
Two stage telescopic vertical arm					
SC-900T-1710	900 (35.4)	360 (14.2)	1710 (67.3)		
SC-900T-1950			1950 (76.8)		
SC-900T-2130			2130 (83.9)		
SC-900T-2600			2600 (102.4)		
SC-900T-3000			3000 (118.1)		
SC-1100T-1950	1084 (42.7)	480 (18.9)	1950 (76.8)		
SC-1100T-2130			2130 (83.9)		
SC-1100T-2600			2600 (102.4)		
SC-1100T-3000			3000 (118.1)		
SC-1300T-2130	1284 (50.6)	600 (23.6)	2130 (83.9)		
SC-1300T-2600			2600 (102.4)		
SC-1300T-3000			3000 (118.1)		

LARGE BEAM (1500-4500 TON) TRAVERSE ROBOTS

Model Number	Vertical Stroke, mm (in.)	Kick Stroke, mm (in.)	Traverse Stroke, mm (in.)	Payload, lbs.	
Two stage telescopic vertical arm					
SC-1500T-2190	1465 (57.7)	680 (26.8)	2190 (86.2)	66.0	
SC-1500T-2310			2310 (90.9)		
SC-1500T-2490			2490 (98.0)		
SC-1500T-3000			3000 (118.1)		
SC-1500T-3500			3500 (137.8)		
SC-1700T-2310	1700 (66.9)	800 (31.5)	2310 (90.9)		
SC-1700T-2490			2490 (98.0)		
SC-1700T-3000			3000 (118.1)		
SC-1700T-3500			3500 (137.8)		
SC-2000T-2490	1945 (76.6)	920 (36.2)	2490 (98.0)		
SC-2000T-3000			3000 (118.1)		
SC-2000T-3500			3500 (137.8)		
SC-2500T-3010	2465 (97.0)	1130 (44.5)	3010 (118.5)		110.0
SC-2500T-4000			4000 (157.5)		
SC-2500T-5000			5000 (196.9)		
SC-3000T-3010	2945 (115.9)	1310 (51.6)	3010 (118.5)		
SC-3000T-4000			4000 (157.5)		
SC-3000T-5000			5000 (196.9)		

* Operating voltage: 220/3/60

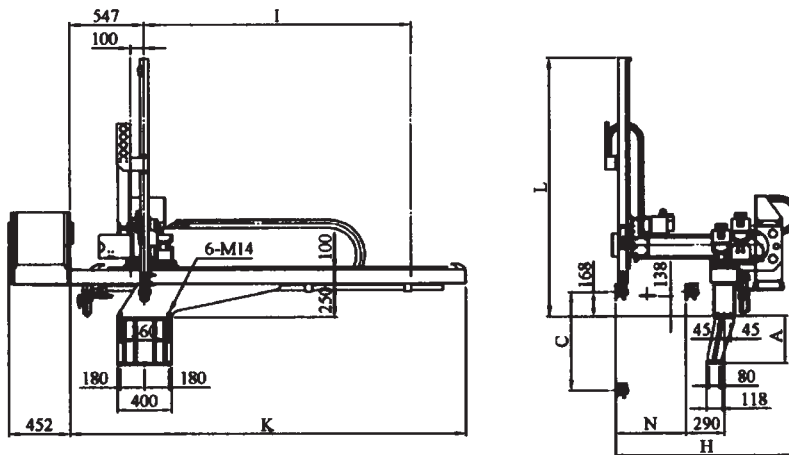


APEX SC SERIES

SMALL BEAM (80-1000 TON) TRAVERSE ROBOTS - SINGLE STAGE

Model Number	C (mm)	H (mm)	I (mm)	K (mm)	L (mm)	N (mm)
SC-900	864	1232	1710	2746	1691	360
SC-1100	1064	1352	1950	2986	1891	480
SC-1300	1264	1472	2130	3166	2091	600

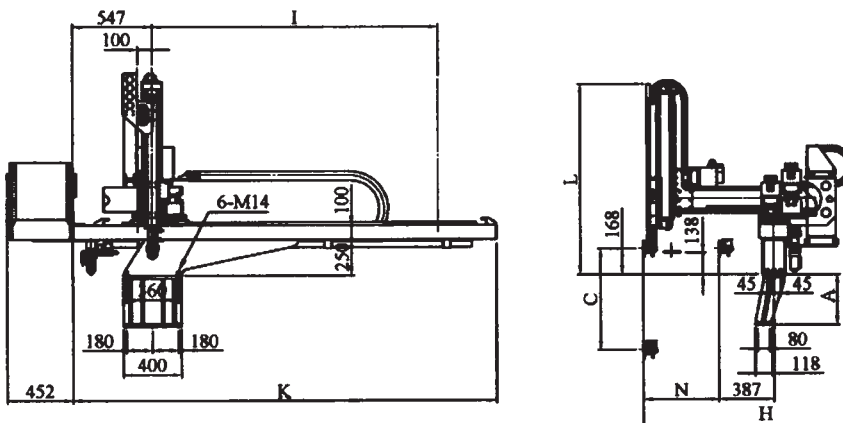
Extension traverse available: 2600mm and 3000mm



SMALL BEAM (80-1000 TON) TRAVERSE ROBOTS - TWO STAGE TELESCOPIC

Model Number	C (mm)	H (mm)	I (mm)	K (mm)	L (mm)	N (mm)
SC-900T	900	1329	1710	2746	1318	360
SC-1100T	1084	1449	1950	2986	1398	480
SC-1300T	1284	1569	2130	3166	1498	600

Extension traverse available: 2600mm and 3000mm

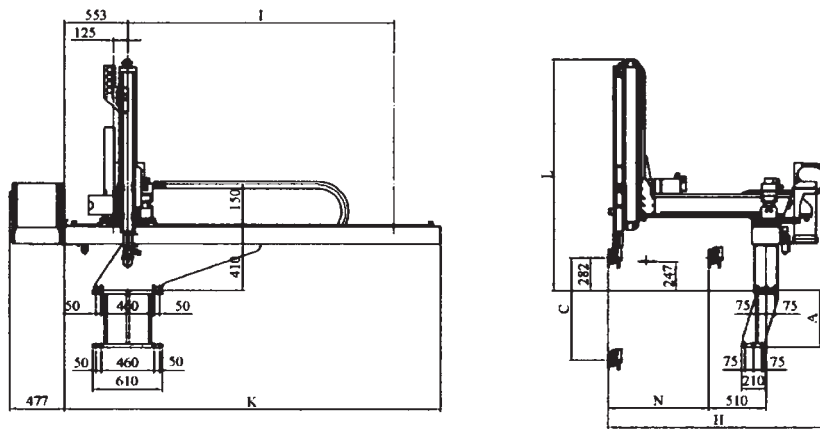


APEX SC SERIES

LARGE BEAM (1500-4500 TON) TRAVERSE ROBOTS - TWO STAGE TELESCOPIC

Model Number	C (mm)	H (mm)	I (mm)	K (mm)	L (mm)	N (mm)
SC-1500T	1465	1818	2190	3156	1911	680
SC-1700T	1700	1938	2310	3276	2031	800
SC-2000T	1945	2058	2490	3456	2151	920

Extension traverse available: 3000mm and 3500mm



LARGE BEAM (1500-4500 TON) TRAVERSE ROBOTS - TWO STAGE TELESCOPIC

Model Number	C (mm)	H (mm)	I (mm)	K (mm)	L (mm)	N (mm)
SC-2500T	2465	2330	3010	4005	2430	1130
SC-3000T	2945	2510	3010	4005	2670	1310

Extension traverse available: 4000mm and 5000mm

