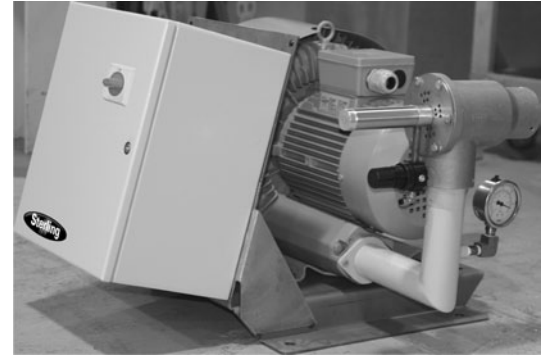


## SPC SERIES QUIET, REGENERATIVE CENTRIFUGAL BLOWER

The Sterling SPC Series vacuum pump allows for the conveying of free-flowing palletized plastic materials using vacuum receivers integrated into a central conveying system. Sterling vacuum pumps are designed for 24 hour, continuous operation and is recommended for clean, free-flowing material with little or no dust.

Sterling is able to provide several types of ultracompact vacuum power units to suit your conveying needs. The SPC Series vacuum pump uses a quiet regenerative/centrifugal blower and can be utilized to convey freeflowing palletized materials over distances up to 400 equivalent feet.



### Features

- Regenerative/centrifugal blower
- Atmospheric vent valve
- NEMA 12 junction box with disconnect, motor starter, and overload
- 230/3/60 and 460/3/60 supply voltage
- High vacuum relief for safe operation

### Dimensions:

- SPC 3.5: 35 L x 36 W x 18 H (89 x 91 x 46 cm)
- SPC 6.5: 31 L x 24 W x 18 H (79 x 61 x 46 cm)
- SPC 11: 35 L x 31 W x 19 H (89 x 79 x 48 cm)

### Maximum recommended conveying distance:

- SPC 3.5: 0-150 equivalent feet (46 m)
- SPC 6.5: 0-300 equivalent feet (91 m)
- SPC 11: 0-400 equivalent feet (122 m)

### Shipping Weight:

- SPC 3.5: 130 lbs. (59 kg)
- SPC 6.5: 149 lbs. (66 kg)
- SPC 11: 160 lbs. (73 kg)

### Options

- Special voltage: 220/3/50, 230/3/60, 380-415/3/50, 208/3/60, 575/3/60
- Filter support bracket
- Purge capability
- Closed loop conveying valve

## SPC SERIES

### SPECIFICATIONS

Model	Air Flow		460 V Power Unit		Vacuum Line Size	Material Line Size	Recommended Vacuum Receivers	
	cfm	cmh	HP	kW	In., OD	In., OD	cu. ft.	liters
SPC 3.5	106	180	3.5	2.7	2	1.5	0.1, 0.2, 0.4, 0.8	3, 6, 11, 23
SPC 6.5	152	258	5	3.7	2	2	0.1, 0.2, 0.4, 0.8, 1.6	3, 6, 11, 23, 45
SPC 11	155	381	11	8.2	2.5	2.5	1.6, 3	45, 85

### FULL LOAD AMPS

	230V	460V	575V
SPC 3.5	7.1	4.6	3.0
SPC 6.5	12.9	6.5	4.3
SPC 11	32.5	16.2	10.6

